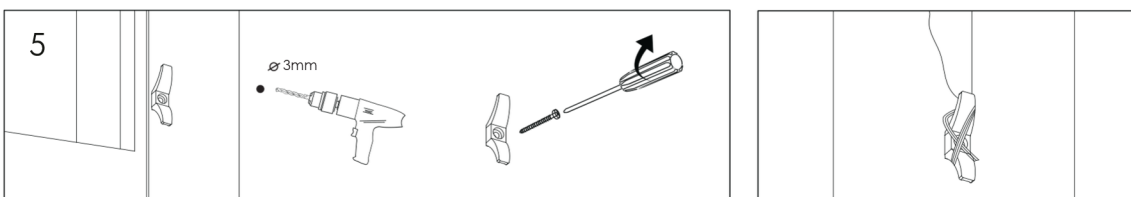
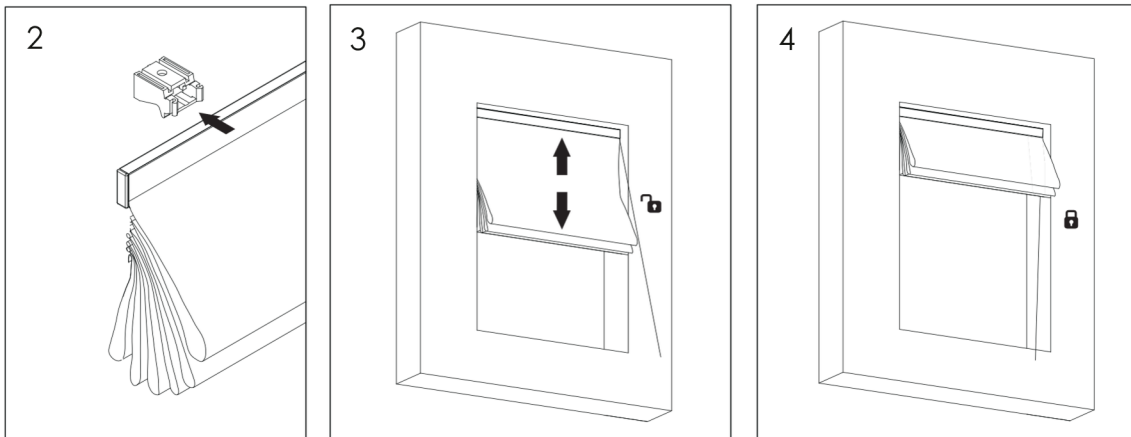
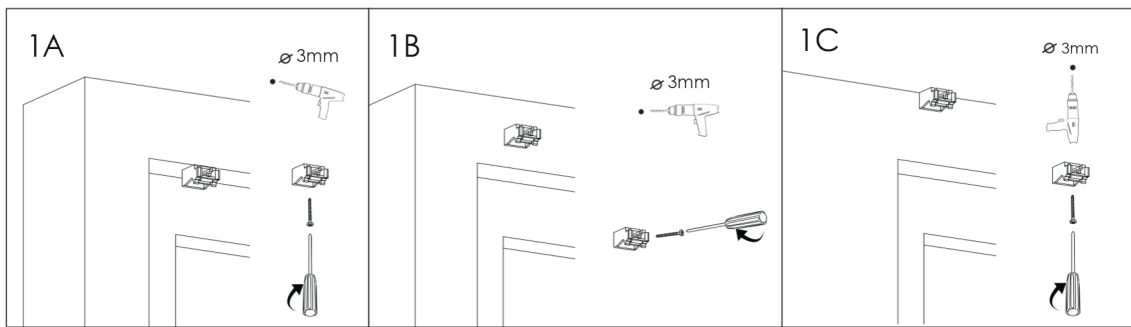
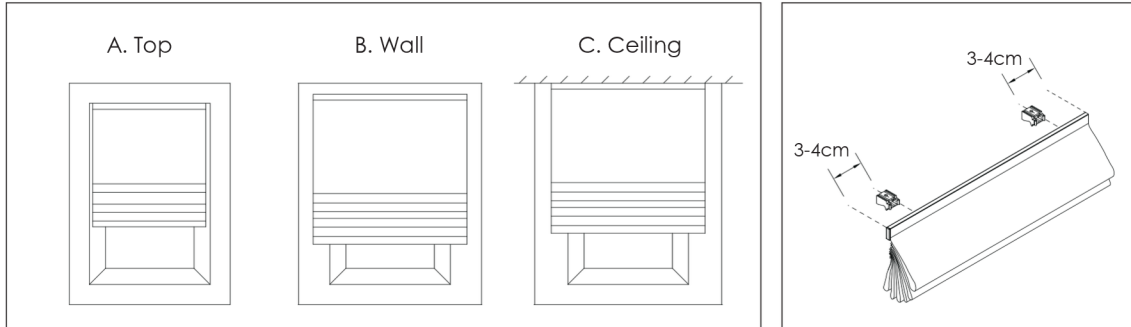


Mounting

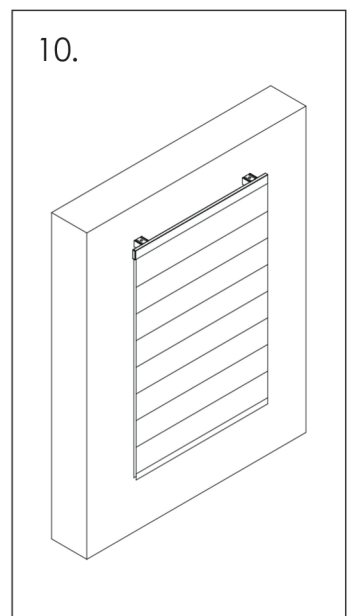
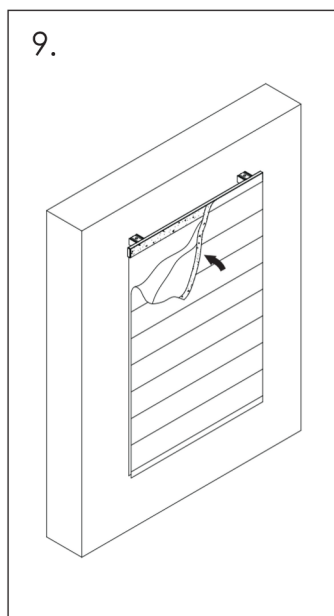
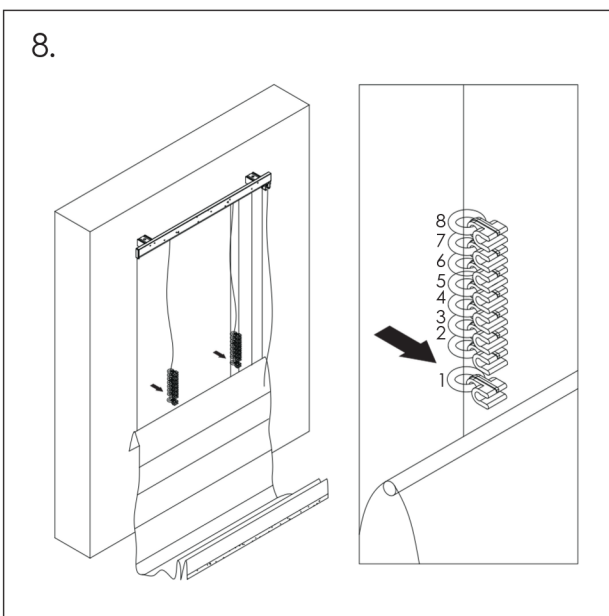
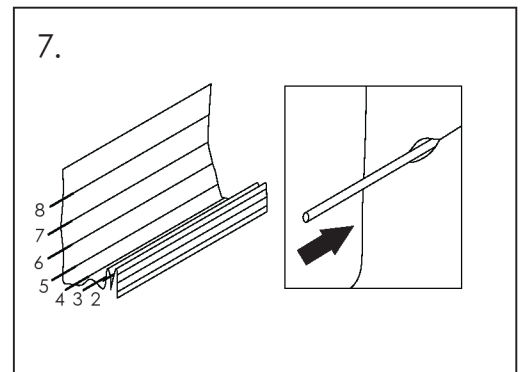
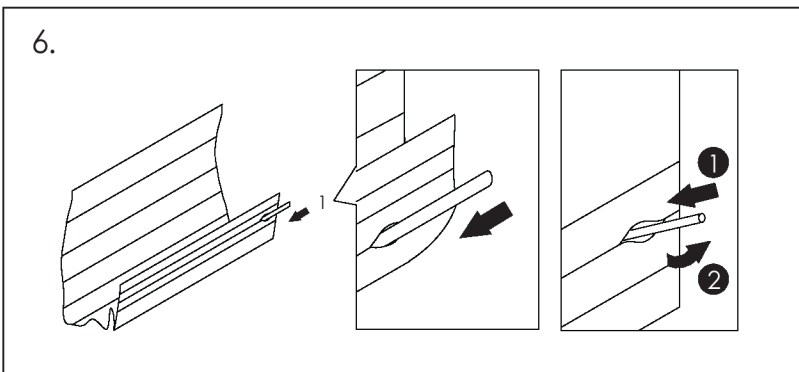
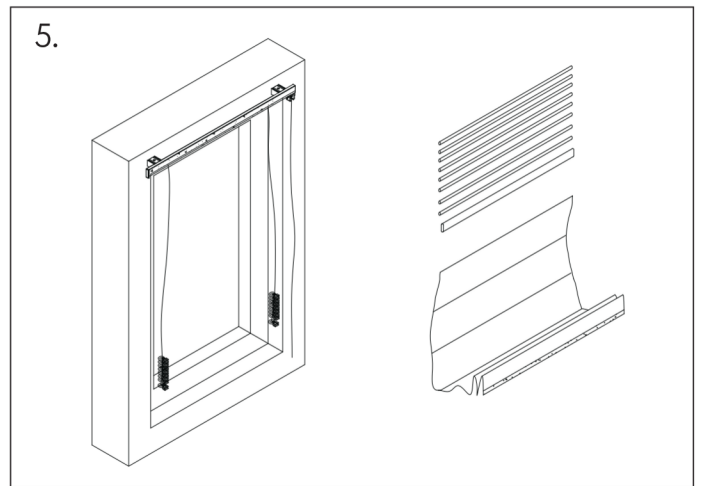
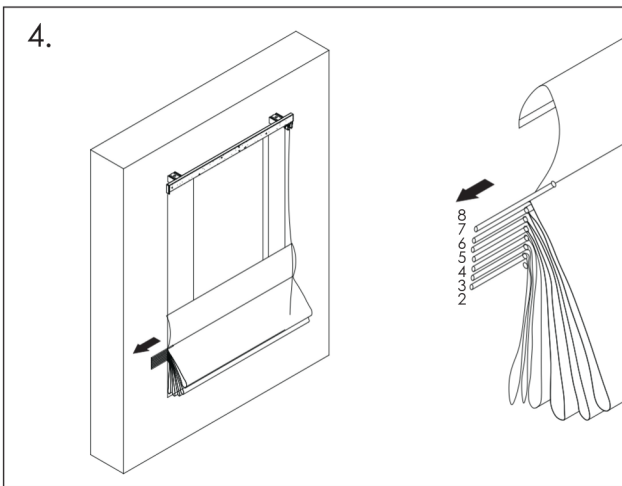
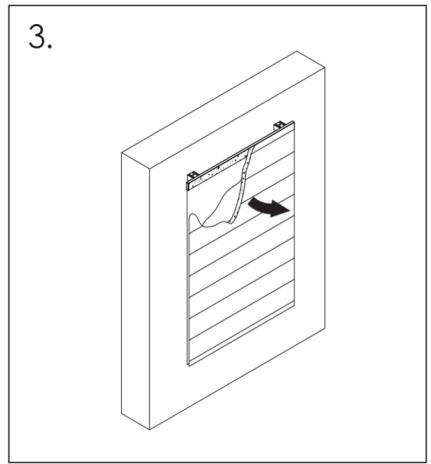
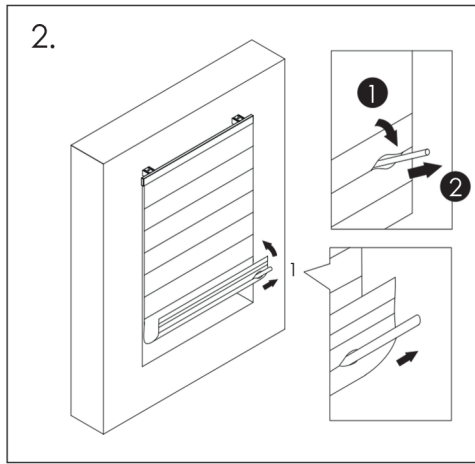
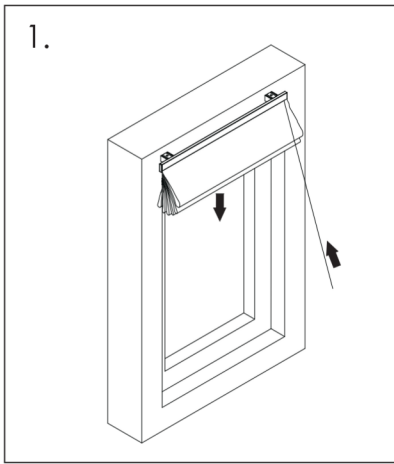


scan to chat





40°



! WARNING

Accidents have occurred when young children have been strangled in snares incurred of cords, chains, bands and strings. Cords/chains can contort around the neck of a child. To avoid strangulation or entangle accidents, make sure the cords/chains are out of reach for children. Do not tie cords. Assure the cords are not twisted or form a snare. To reduce the risk, you shall assemble the belonging child safety device according to instruction below:

Keep the hanging part of cord out of reach for children. Fixate the cord by wrap up the entire cord around the cleat.

Ball chains for roller blinds shall permanently be fixated and stretched (no slack) against the wall by using the belonging child safety device.

Do not allow children to play with cords/chains. Move away beds and other furniture from window products that have cords/chains.

Small parts can cause choking. Regularly check the safety device. Exchange the device if it is broken or do not work.
Read the assembling instruction carefully before you assemble and use the product.

scan to chat

