

Screen Doors

Installation Instructions

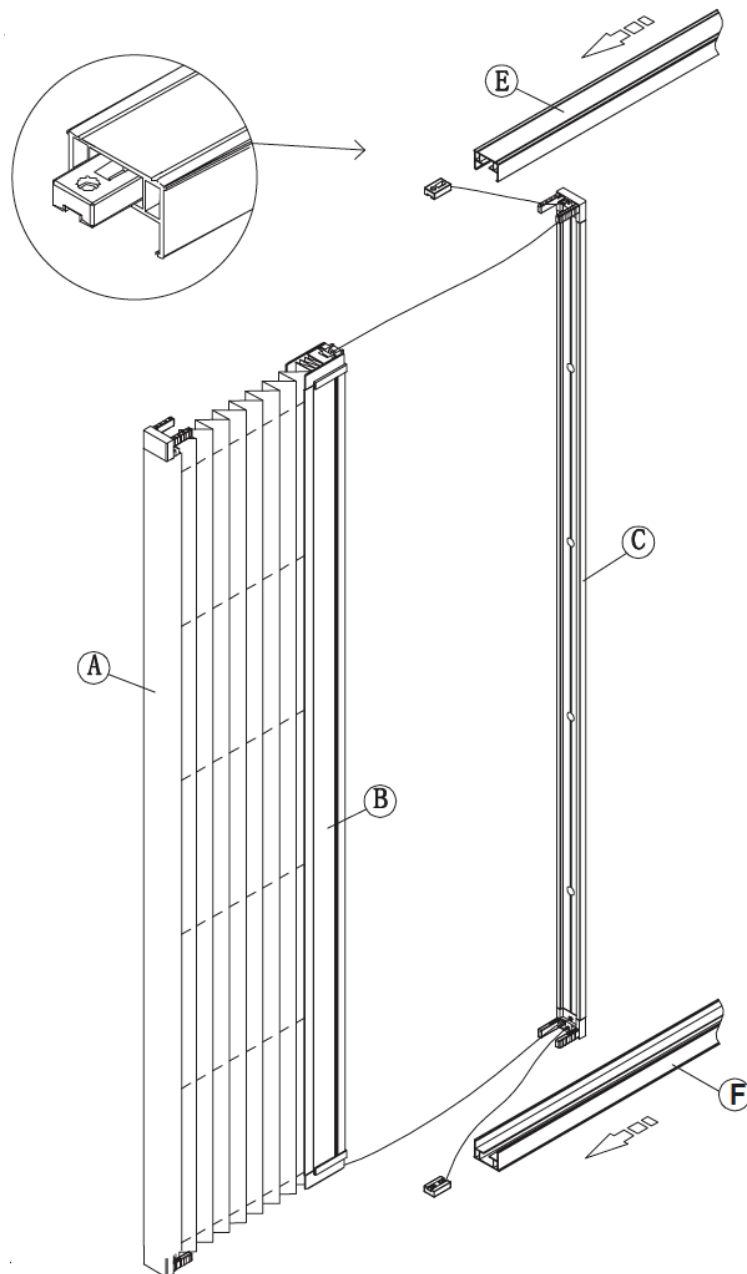
Please read the following measuring instructions carefully. We are unable to accept responsibility for products that have not been measured or installed.

Retractable Pleated Screen Door

Frame Assembly

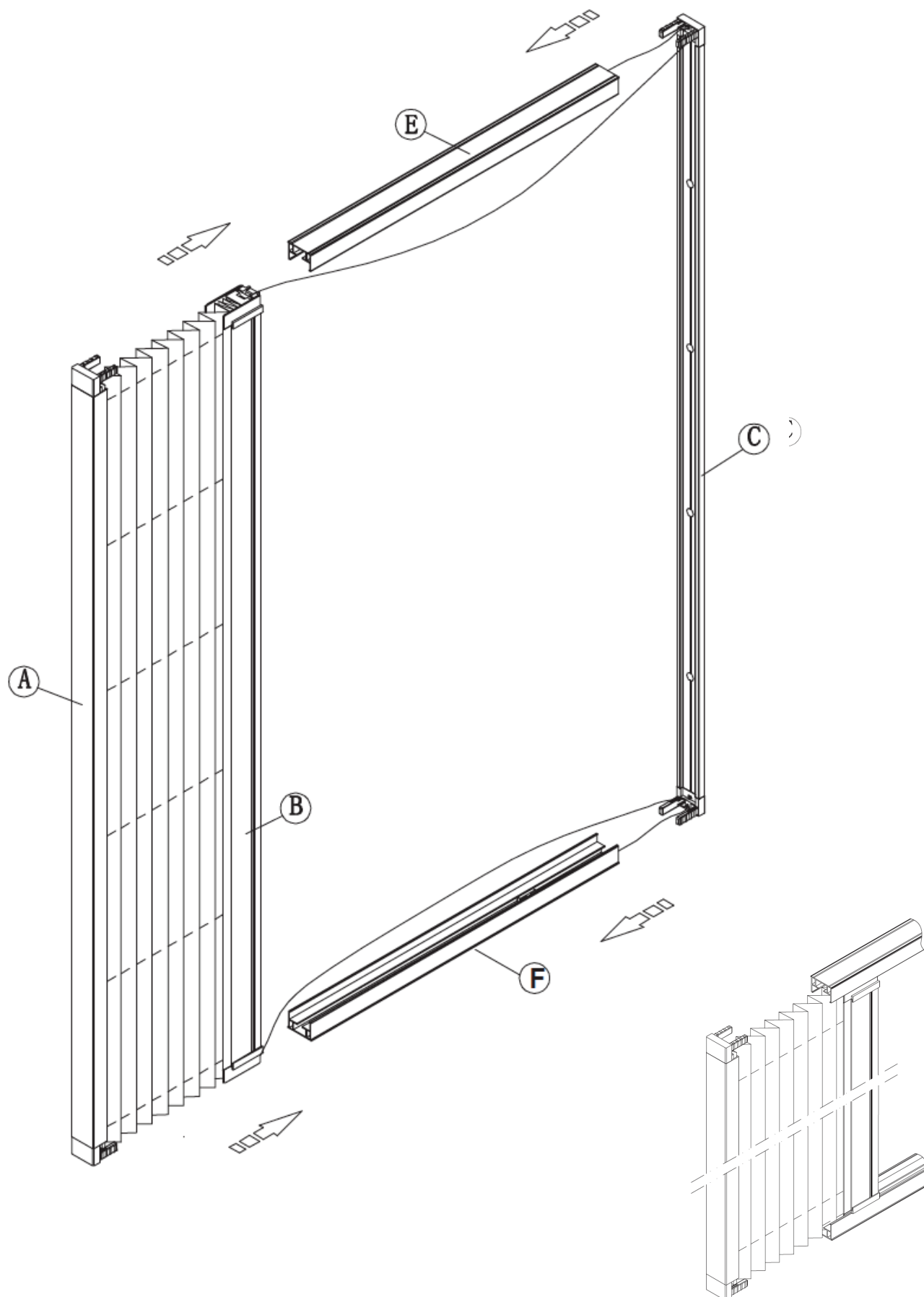
Connecting Corners and Wire Guides

Slide the plastic caps attached with the string into **E** and **F** respectively.



THANK YOU FOR SHOPPING WITH US
WWW.BESTBLINDS.CO.NZ

Join parts A,B,C, E and F together.

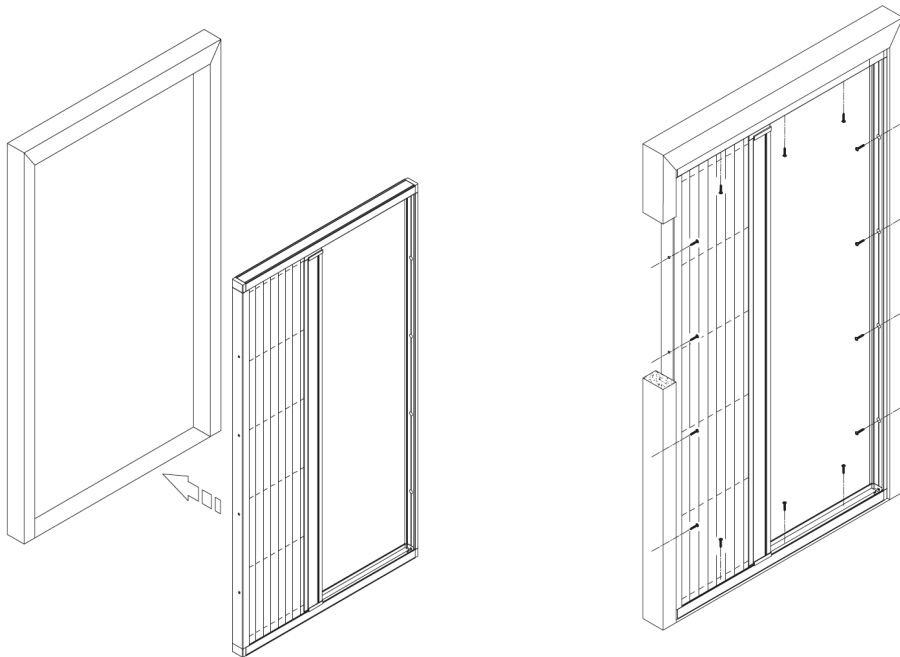


THANK YOU FOR SHOPPING WITH US

WWW.BESTBLINDS.CO.NZ

Place your screen in the frame or on the frame, this will change depending on how your measurements were taken

Fix the screen using the holes provided, please note that if your screen was made to be fitted on the frame, you should use the holes on the face of the screen.



Wire Guides

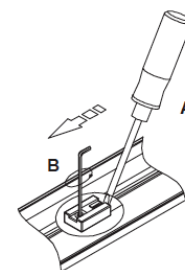
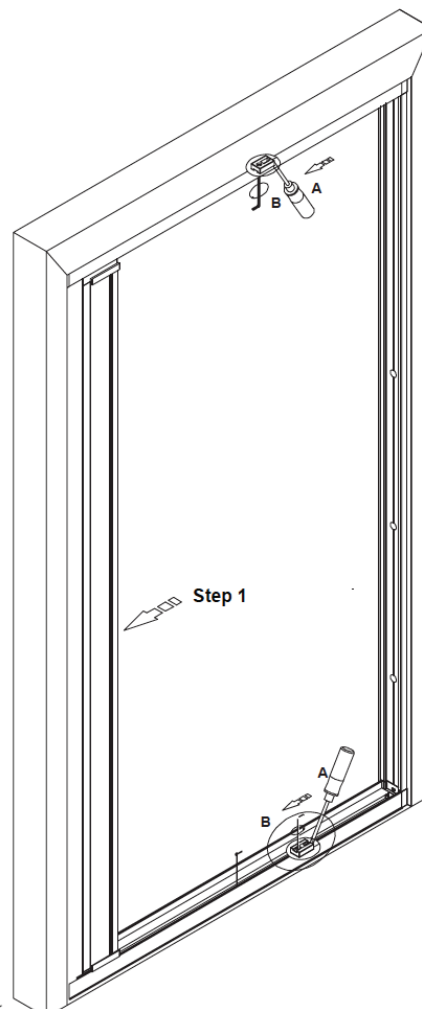
Step 1

Push screen all the way towards the end

Step 2

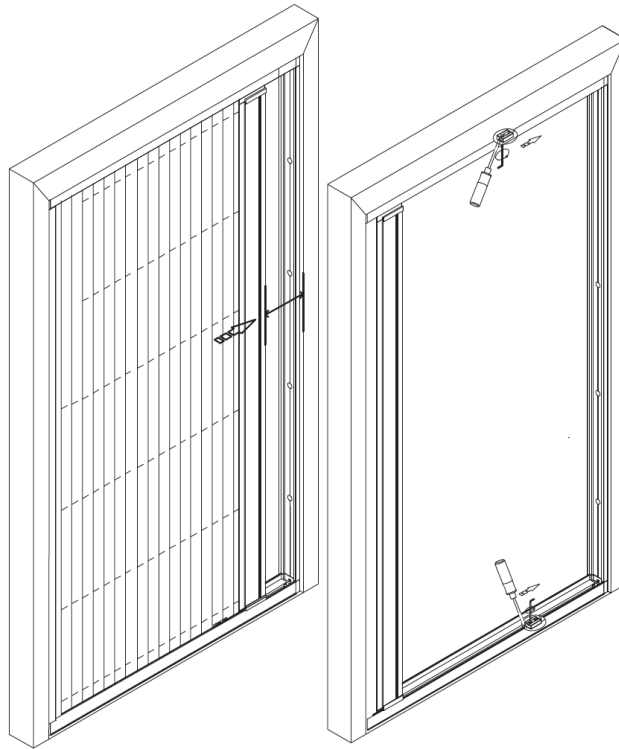
A. Place the plastic guide back onto the track
With a screw driver, push the plastic guide towards the screen (as far as you can)

B. Then secure the cap with the Allen key



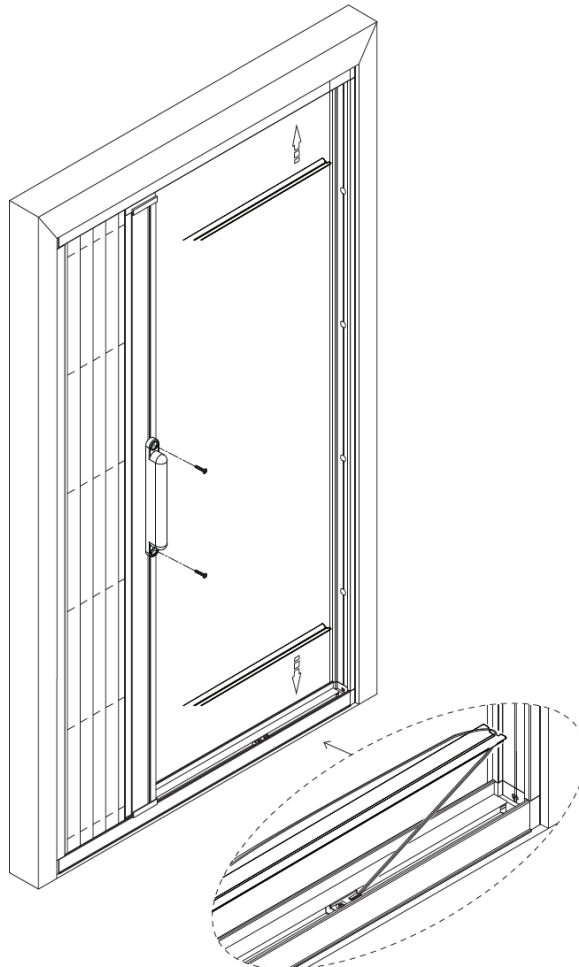
THANK YOU FOR SHOPPING WITH US
WWW.BESTBLINDS.CO.NZ

Run the screen across the frame. Make further adjustmet to the wire guide if necessary.



Track Covers

Once you have completed the above step and tested the screen, place track covers as per picture.



THANK YOU FOR SHOPPING WITH US
WWW.BESTBLINDS.CO.NZ